

Product Profile

ISO & CE certified

- Seed Processing Equipment
- Automatic Weighing & Bagging
- Seed Packing Machine

WESTERN AGROTECH EQUIPMENT



WWW.waeagri.com



westernagroequipment@gmail.com



#162, Hsiidc Industrial Area,
Saha, Ambala - 133104 (HR)

ABOUT US

Western Agrotech Equipment is an Ambala, Haryana, India based business entity that deals in Seed/Grain Processing Plant, Dryer, MTR, Moisture Meter, Digital Seed Counter, Conveyor Packing Machine and more of unmatched quality. We use quality material and modern manufacturing process for leaving no stone unturned in offering our customers the best-in-class range of products. Apart from our quality assured range of machinery, it is our strict adherence to maintain transparency in our business deals that makes us the favorite of our customers. Thus, enabling us set up a large client base in the market. Moreover, it is our team of skilled employees which relentlessly works to achieve our set targets on time.

Business Specifics of Western Agrotech Equipment:

Nature of Business	: Manufacturer and Supplier
Year of Establishment	: 2013
No. of Employees	: 15
No. of Designers	: 02
No. of Engineers	: 04
No. of Production Units	: 02
Warehousing Facility	: Yes
Monthly Production Capacity	: As Per Requirement
Banking Partner	: Corporation Bank
Working As Original Equipment Manufacturer	: Yes
GST No.	: 06AADFW4570G1Z4
Ownership Type	: Partnership
Certification	: ISO 9001:2015 and CE-2188 & Approved by Govt. of India, Test Centre
Certificate No.	: QMS2017766

HAPPY CUSTOMERS:



WESTERN AGROTECH EQUIPMENT

Address : #162, HSIIDC, Industrial Area, Saha, Ambala - 133104 (HR) India.
Contact : +91-8708525592, +91-7015458509, Email : westernagroequipment@gmail.com, www.waeagri.com

ISO CERTIFICATE

SMCS SMCS SMCS SMCS SMCS SMCS SMCS



Certificate of Registration

WESTERN AGROTECH EQUIPMENT

PLOT NO. 1, DESHMESH COLONY, JAROT ROAD, AMBALA CITY – 134007, HARYANA, INDIA

Certify that the management system of the above organisation has been audited and found to be in accordance with requirements of standard detailed below.

ISO 9001:2015 (QUALITY MANAGEMENT SYSTEM)

MANUFACTURING, TRADING AND SUPPLY OF SEED PROCESSING, EQUIPMENT, AGRICULTURE, SCIENTIFIC AND LABORATORY EQUIPMENT, MOISTURE METER AND MAIZE SHELLER

Certificate No. : QMS210082

This certification was conducted in accordance with the SM Certification Services auditing and certification procedures and is subject to regular surveillance audits.

Certificate Issue Date	: 15th March 2021	Certificate Expiry Date	: 14th March 2024
Date of Initial Registration	: 15th March 2021	Re-Certification Period	: 3 Years
1st Surveillance Due	: 15th March 2022	2nd Surveillance Due	: 15th March 2023

Further clarification regarding the scope of this certification of ISO 9001:2015 requirements may be obtained by consulting To Check the Certificate validity please refer Web.: www.smcertificationservices.com



System Certification Manager

SM CERTIFICATION SERVICES

Register Under American International Accreditation Organization (Registration No AIAO-BAR-091514-1B)

This Certificate is valid for 3 years subject to successful surveillance audit.

SMCS SMCS SMCS SMCS SMCS SMCS SMCS

WESTERN AGROTECH EQUIPMENT

Address : #162, HSIIDC, Industrial Area, Saha, Ambala - 133104 (HR) India.
Contact : +91-8708525592, +91-7015458509, Email : westernagroequipment@gmail.com, www.waeagri.com

CE CERTIFICATE



CERTIFICATE

*This is to Certify that the
Technical Documentation of*

WESTERN AGROTECH EQUIPMENT

JPLOT NO. 1, DESHMESH COLONY, JAROT ROAD,
AMBALA CITY – 134007, HARYANA, INDIA

has been independently assessed and is compliant with the requirement of:

Directive 2006/42/EC & 2014/68/EU

This certificate is applicable to the following products:

MOISTURE METER, SEED CLEANER, SEED SPECIFIC GRAVITY
SEPERATOR, SEED GRADER, INTENDED CYLINDER GRADER, AUTOMATIC
WEIGHING & BAGGING MACHINE, MOBILE SEED PLANT, CONVEYER
STICHING MACHINE, DE-STONER, ELEVATOR, GRAIN LAB EQUIPMENT,
PACKAGING MACHINE, MAIZE SHELLER, THRESHER, DALL MILL, MOBILE
SEED / GRAIN PROCESSING PLANT & WEIGHING SCALE

This certificate refers to the information examined and read with manufacturer's declaration of conformity. Further, the product liability rests with the manufacturer or his representative in accordance with the council directive 2006/42/EC & 2014/35/EU. The CE Mark as shown below can be used, under the responsibility of manufacturer, after completion of a CE Declaration of conformity and compliance with the relevant CE

Certificate No.: **SPC19C3452**

Date of Initial Registration: 06-09-2019

1st Surveillance audit on or before: 05-09-2020

2nd Surveillance audit on or before: 05-09-2021

Date of Re-Certification: 06-09-2022

Authorised Signatory

SP Certification Limited

130, Old Street, London,
EC1V9BD, U.K.

Email: info@spcertification.co.uk
www.spcertification.co.uk



Accredited by Accreditation Forum of International Standards [AFIST (UK) LTD.]

9, Park View Road, Leeds, LS4 2LG, United Kingdom (UK), Email : info@afist.org, Website : www.afist.org

The approval is subject to the company maintaining its system to the required standards, which will be monitored by SPC. The Certificate remains the property of SPC and must be returned on request.

To check validity of this certificate please visit www.spcertification.co.uk and www.afist.org

WESTERN AGROTECH EQUIPMENT

Address : #162, HSIIDC, Industrial Area, Saha, Ambala - 133104 (HR) India.

Contact : +91-8708525592, +91-7015458509, Email : westernagroequipment@gmail.com, www.waeagri.com

SEED PRE CLEANER/GRAIN CLEANER



Features:

- Corrosion free screen made up of MS.
- Separation is carried out in different stages.
- Designed with sound and dust proof technology for Pollution control integrated compact unit.
- JSW, Tata Steel brand MS Sheet.
- 10 & 14 gauge sheets.
- Bearing make SKF/NRB/NTN etc.
- Motor make Crompton, ABB, etc.



Cleaning Grading Capacity on Wheat bases at 12% moisture content and 10% Impurities. Used for efficient cleaning of all types of cereal grains, paddy, rice, wheat, malting barley, coffee seeds etc.

Model No.	WAE-C32	WAE-C52	WAE-C72	WAE-C102
Capacity	1-1.5TPH	2-2.5TPH	3-4TPH	4-5TPH
No. of screen	Two/Three	Two/Three	Two/Three	Two/Three
Top Screen	Scalping	Scalping	Scalping	Scalping
Middle & bottom Screen	Grading & under size	Grading & under size	Grading & under size	Grading & under size
Screen Size	65cm*150cm	95cm*150cm	100cm*200cm	120cm*200cm
Power	5HP	5HP	6.5HP	7.5HP
No. of Aspiration	One/Two	Two	Two	Two
Screen Cleaning device	Balls & Nylon Brush	Balls & Nylon Brush	Balls & Nylon Brush	Balls & Nylon Brush
Dimension (L*W*H)	2410x1275x2225mm	2410x1335x2290mm	3120x1910x2550mm	3150x1980x2590mm

WESTERN AGRO TECH EQUIPMENT

SEED FINE CLEANER/SEED GRADER



Features:

- Corrosion free screen made up of MS.
- Separation is carried out in different stages.
- Designed with sound and dust proof technology for Pollution control integrated compact unit.
- JSW, Tata Steel brand MS Sheet.
- 10 & 14 gauge sheets.
- Bearing make SKF/NRB/NTN etc.
- Motor make Crompton, ABB, etc.



Cleaning Grading Capacity on Wheat bases at 12% moisture content and 10% Impurities. Used for efficient cleaning of all types of cereal grains, paddy, rice, wheat, malting barley, coffee seeds etc.

Model No.	WAE-G53	WAE-G63	WAE-G73	WAE-G103
Capacity	1-1.5TPH	2-2.5TPH	3-4TPH	4-5TPH
No. of Screens	Two/Three	Two/Three	Two/Three	Two/Three
Top Screen	Scalping	Scalping	Scalping	Scalping
Middle & Bottom Screen	Grading under size	Grading under size	Grading under size	Grading under size
Screen Size	70cmX150cm	100cmX200cm	120cmX200cm	140cmX200cm
Power	5 HP	5 HP	7.5 HP	10 HP
No of Aspiration	One/Two	Two	Two	Two
Screen cleaning Device	Balls & Nylon Brush	Balls & Nylon Brush	Balls & Nylon Brush	Balls & Nylon Brush
Dimension (L*W*H)	2460 x 1585 x 2290mm	3100 x 1810 x 2380mm	3150 x 1980 x 2590mm	3120 x 2125 x 2585mm

WESTERN AGRO TECH EQUIPMENT

GRAVITY SEPARATOR

Features:

- Efficient & precise separation of stones.
- Provided with closed circuit aspirator.
- Sturdy, Rigid and Heavy duty construction.
- Robust construction to withstand high vibration.
- Bearing make SKF/NRB/NTN etc.
- Motor make Crompton, ABB, etc.



The Machine is suitable for removing impurities and achieving very high grading quality in any free flowing granular material, Grain Seed and Spices etc.

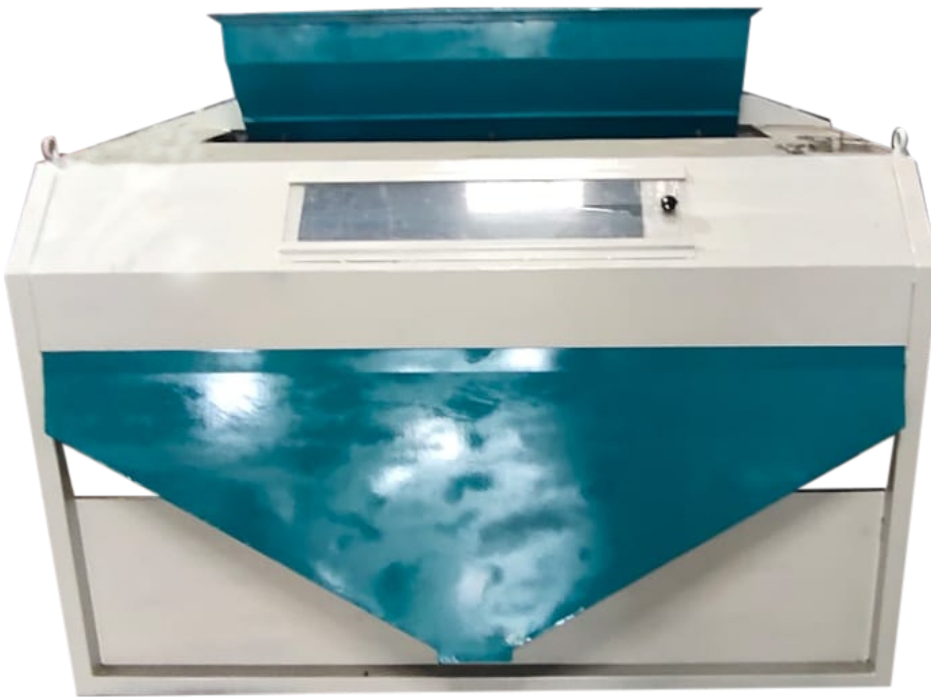
Model No.	WAE-GS11	WAE-GS12	WAE-GS13	WAE-GS14
Capacity	1-1.5TPH	2-2.5TPH	3-4TPH	4-5TPH
No. of fan	3Fan	4Fan	5Fan	7Fan
Deck motor	1HP	1HP	1HP	2HP
Bower motor	3HP	5HP	7.5HP	10HP
Speed control system	VFD	VFD	VFD	VFD
Deck Screen Size (L*W)	1700x850mm	2150x1150mm	2400x1100mm	3050x1200mm

WESTERN AGRO TECH EQUIPMENT

IRON MAGNETIC DESTONER

Features:

- JSW, Tata Steel brand MS Sheet.
- 10 & 14 gauge sheets.
- Bearing make SKF/NRB/NTN etc.
- Motor make Crompton, ABB, etc.



To separate stone from the seed.

Model No.	WAE-MD1	WAE-MD2	WAE-MD3	WAE-MD4
capacity	1.5Tph	2.5Tph	3-4Tph	4-5Tph
Screen size	100x800mm	100x1000mm	100x1200mm	100x1500mm
Power	1.5HP	1.5HP	1.5HP	1.5HP
Dimension (L*W*H)	1320x1595x1505mm	1325x1636x1515mm	1371x1676x1525mm	1493x1982x1525mm

WESTERN AGRO TECH EQUIPMENT

VIBRO DESTONER

Features:

- JSW, Tata Steel brand MS Sheet.
- 10 & 14 gauge sheets.
- Bearing make SKF/NBC/NTN etc.
- Motor make Crompton, ABB, etc.



To separate stone from the seed.

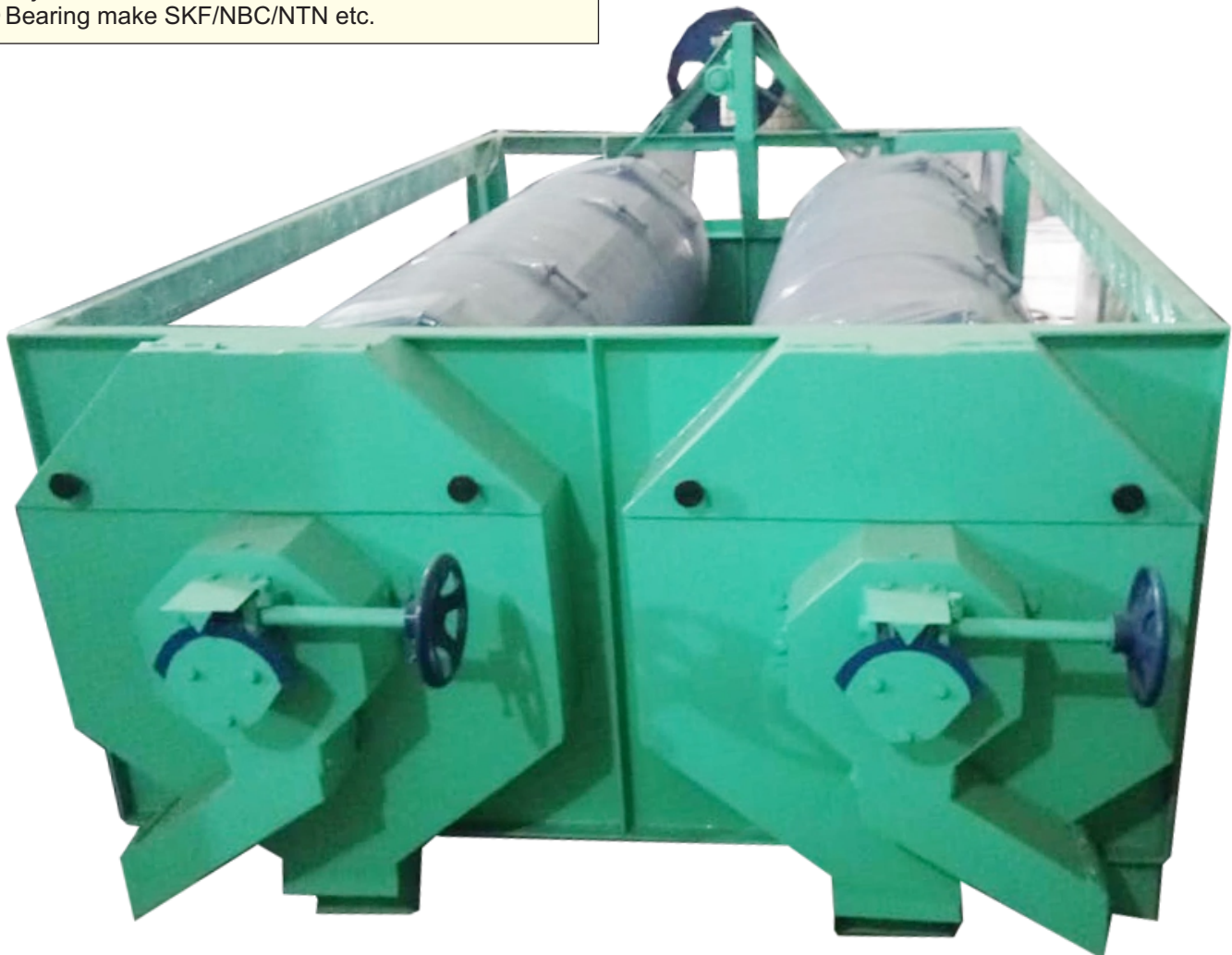
Model No.	WAE-114	WAE-115
Capacity	3-4Tph	5-6Tph
No. of screen	3	3
Screen size	1000X1000mm	1250x1250mm
Power	9.5HP	11HP
Dimension (L*W*H)	1920x1590x2850mm	1965x1625x2900mm

WESTERN AGRO TECH EQUIPMENT

INDENT CYLINDER

Features:

- ➔ High accuracy is obtained while sorting head rice from mixed rice.
- ➔ Control of shorting accuracy by tray inclination adjustment.
- ➔ Bearing make SKF/NBC/NTN etc.



Model No.	WAE-IC1	WAE-IC1A	WAE-IC2	WAE-IC2A
Capacity	1.5TPH	2.5TPH	3-4TPH	4-5TPH
No. of cylinder	1	1	2	2
Segment dia	600mm	650mm	650mm	700mm
Segment length	1500mm	1800mm	2100mm	2500mm
Power	1HP	1HP	2HP	2HP
Speed Adjustment System	Automatic	Automatic	Automatic	Automatic

WESTERN AGRO TECH EQUIPMENT

MOBILE SEED CLEANER CUM GRADER WAE-MG1



SEED GRAVITY SEPARATOR WAE-GS1



TECHNIC SPECIFICATION (WAE-MG1):

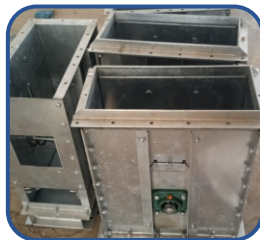
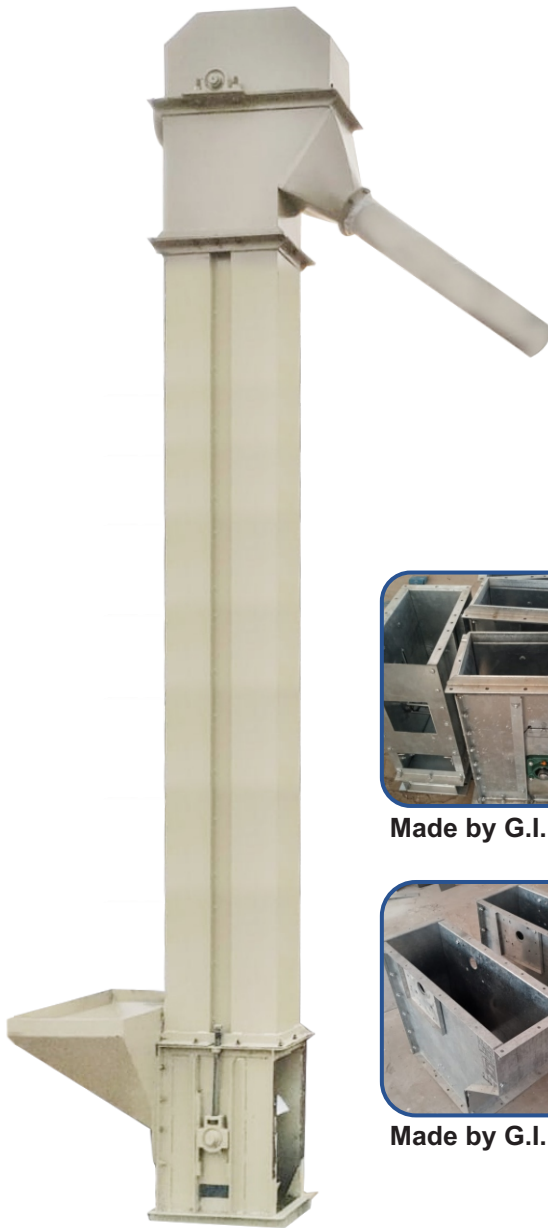
Cleaning Capacity	: 700kg – 1Ton/Hr (on wheat basis)
Screen	: Three screens.
Total Screen Area	: 2meter sq.
Sieve Boat Motor	: 220V, 0.5HP Single/three Phase.
Blower Motor	: 220V, 2 HP Single/three Phase.
Elevator motor	: 220V, 0.5 HP Single/three Phase.
Operating Voltage	: 220V, 50Hz Single/three Phase AC.
Hopper	: Steel construction.
Elevator	: Vertical elevator to feed seed cleaner.
Alternator	: Alternator to provide 220V, single phase AC supply, P.T.O shaft driven in case of power failure.
Trolley	: All above shall be mounted on a trolley. Trolley fitted with heavy duty screw jacks pivoting front axle, one spare wheel, tool box and set of tools for ordinary repair and maintenance.

TECHNIC SPECIFICATION (WAE-GS1):

Cleaning capacity	: 100 kg/hr (based on wheat)
Construction	: CNC processed component used for long life and better accuracy.
Dimension	: 1100 x 700 x 1550 mm (L x W x H) approx.
Motor for blower	: 1HP, 2810 RPM, single phase.
Motor for vibrating deck	: 90W, 1440RPM, single phase.
Operating voltage	: 220V, 50Hz, single phase AC.

WESTERN AGRO TECH EQUIPMENT

VERTICAL BUCKET ELEVATOR



Made by G.I. Sheet



Made by G.I. Sheet

Features:

- G.I. Sheet.
- Bearing make SKF/NRB/NTN etc.
- Motor make Crompton, ABB, etc.



Model No.	WAE-E1	WAE-E2	WAE-E3
Capacity	1-2TPH	3-4TPH	4-5TPH
Motor	1HP with Gearbox	1.5HP with Gearbox	2hp with Gearbox
Bucket size	4Inch	5Inch	6Inch
Material	MS/GI	MS/GI	MS/GI
Belt	Food grade belt jimex	Food grade belt jimex	Food grade belt jimex
Casing size	17.5cmx37.5cm	20cmx45cm	20cmx45cm

WESTERN AGRO TECH EQUIPMENT

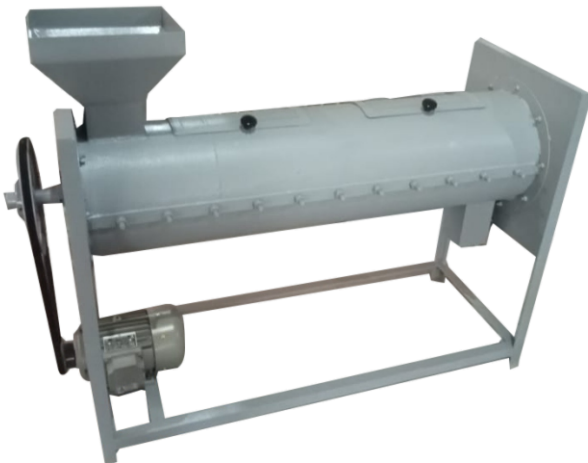
SEED GRADER WAE-SG001



TECHNIC SPECIFICATION (WAE-SG001):

Capacity	: 150-200kg/hr
Material	: Mild Steel
Power	: 2HP, Single phase
Voltage	: 220 V

TAIL CUTTER



Model No.	WAE-TC1	WAE-TC2
Capacity	2-3TPH	4-5TPH
Power	1.5HP	2HP
Dimension (L*W*H)	1500*500*900mm	1600*550*950mm

VIBRO GRADER MTR CLEANING MACHINE WAE-MTR01



TECHNIC SPECIFICATION (WAE-MTR01):

Capacity	: 2-4 Ton/hr
Material	: Mild Steel
Automation Grade	: Automatic
Power Source	: Electric
Voltage	: 440 V

Vibro grader is a effective machine which is use for cleaning all types of seed like wheat, paddy etc.

SEED TREATER WAE-ST1



TECHNIC SPECIFICATION (SWA-ST1):

Capacity Ranges	: 1-5TPH
Material	: MS

WESTERN AGRO TECH EQUIPMENT

PADDY CLEANER WAE-W22



Features:

This equipment utilizes a double sieving system for screening and the winnowing fan removes contaminants like sand, chaff, dust, dead insects, weevils etc. from the grain during pre-cleaning stages in grain warehouses, silos and rice mills.

This equipment is precisely designed for cleaning of cereals, grains, pulses and seeds of different crops and is widely used in the Indian grain markets for paddy and wheat cleaning.

TECHNIC SPECIFICATION(WAE-W22):

Gross weight	: 370kg, (+- 25kg)
Height	: 50" 1
Sheets	: 16 to 18 gauge
Wheel size	: 12" diameter including outer rubber
Capacity	: 4 to 5 Ton per hour
Angle	: ISHISO Marked heavy duty
Power	: Operated by single phase electric motor

SEED DRESSING DRUM WAE-DD25



TECHNIC SPECIFICATION (WAE-DD25):

Capacity	: 25 Kg/hr
Material	: Metal/GI
Type	: Grain Processing Equipment
General Use	: For Treater Seed
Power	: Manual

More Information:

Please Visit Us www.waeagri.com



POUCH PACKING MACHINE



AUTOMATIC WEIGHING & BAGGING MACHINE PNEUMATIC TYPE - AWBP1



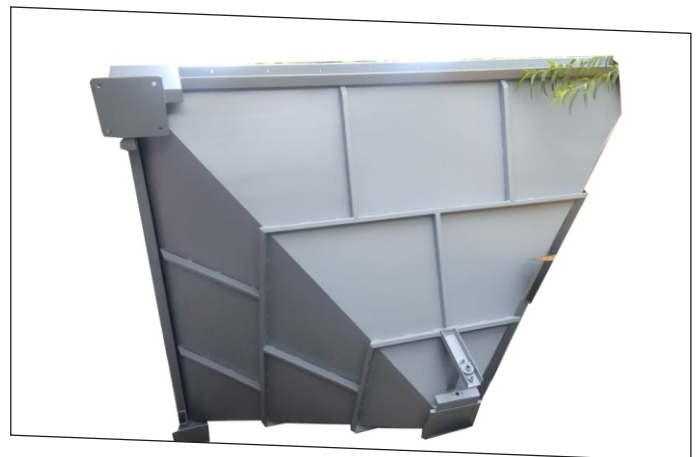
TECHNIC SPECIFICATION (AWBP1):

Weighing Range	: 10-50 kg
Accuracy	: $\pm 0.5\%$
Display	: 7 Segments, 7 Digit LED Display, Digit height 25 mm.
Output Speed	: 3 – 5 bags per min. (No. of (Bags/Min) bags per min depend upon the commodity being weighed, the weight of the bag, and accuracy required).
Bag Holder	: Pneumatic bag holder

PACKING MACHINE WITH CONVEYOR



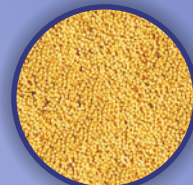
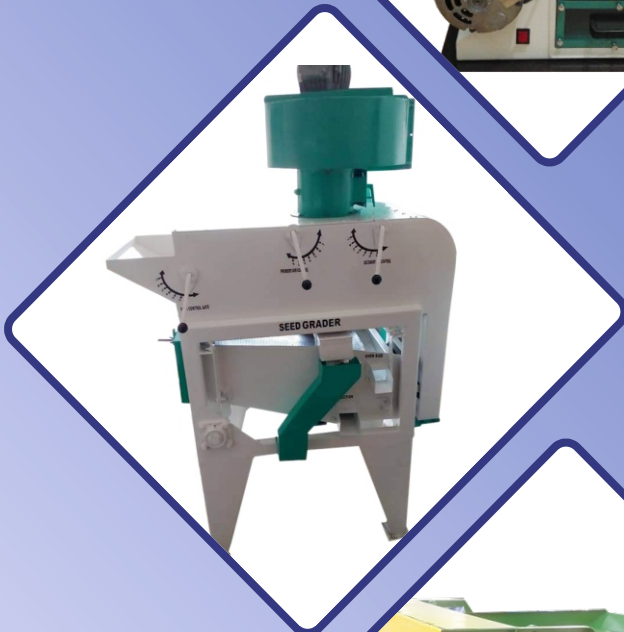
BAGGING BIN



WESTERN AGRO TECH EQUIPMENT



WESTERN AGRO TECH EQUIPMENT



WESTERN AGROTECH EQUIPMENT

Address : #162, HSIIDC, Industrial Area, Saha, Ambala - 133104 (HR) India.
Contact : +91-8708525592, +91-7015458509,
Email : westernagroequipment@gmail.com, www.waeagri.com

